

2 cm

LEAVE SPACE FOR RECORD DETAILS
5 X 20 centimetres

S P E C I M E N O N L Y

PLAN OF SURVEY OF
STRATA PARCELS 1A & 2A
BEING PART OF
LOTS 1 & 2, BLOCK 75, PLAN 74500 (CLSR)
IBEX COORDINATED SURVEY AREA

(LOCATION DESCRIPTION)
(SEE GUIDELINES FOR PREPARATION OF PLANS)

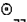


SURVEYED BY G.M. CHRISTIE, CLS IN 1993

SCALE 1:200

0 5 10 20 METRES

LEGEND

Bearings are grid derived from the bearing 05°30'20" of the line between the posts defining the West boundary of Lot 1 as shown on the Plan 74500 CLSR and according to that plan are referred to the Central Meridian of U.T.M. Zone 8 (135° West Longitude).

CLS standard posts shown thus 
CLS 77 posts shown thus 
Volume dealt with by this plan bounded thus 

Distances are horizontal at ground level.
Distances and elevations are in metres.
Elevations are geodetic and are derived from CCM monuments:
1. CCM 70G9 - Elevation = 667.784 and
2. CCM 70G10 - Elevation = 667.599
Strata Parcel boundaries are either horizontal or vertical planes unless otherwise shown.
Field notes for this survey are recorded under _____ CLSR.

Certified Correct

G.M. CHRISTIE, CLS
IBEX, NWT, September 15, 1993

ADD APPROPRIATE ENDORSEMENT CERTIFICATES

SP 3-2

D3-4

HIGHWAY No. 100
PLAN 55136 CLSR 329 LTO

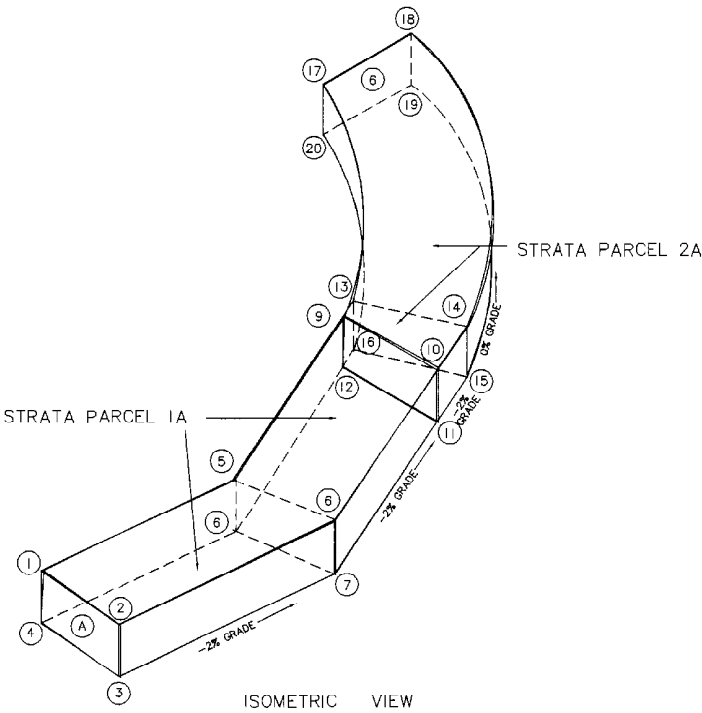
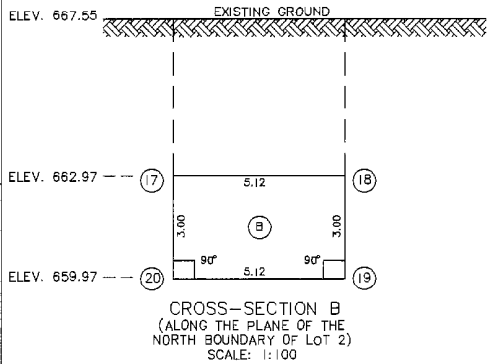
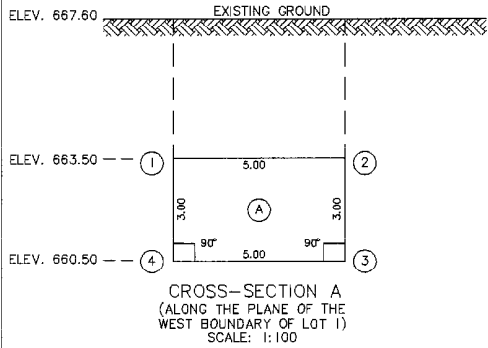
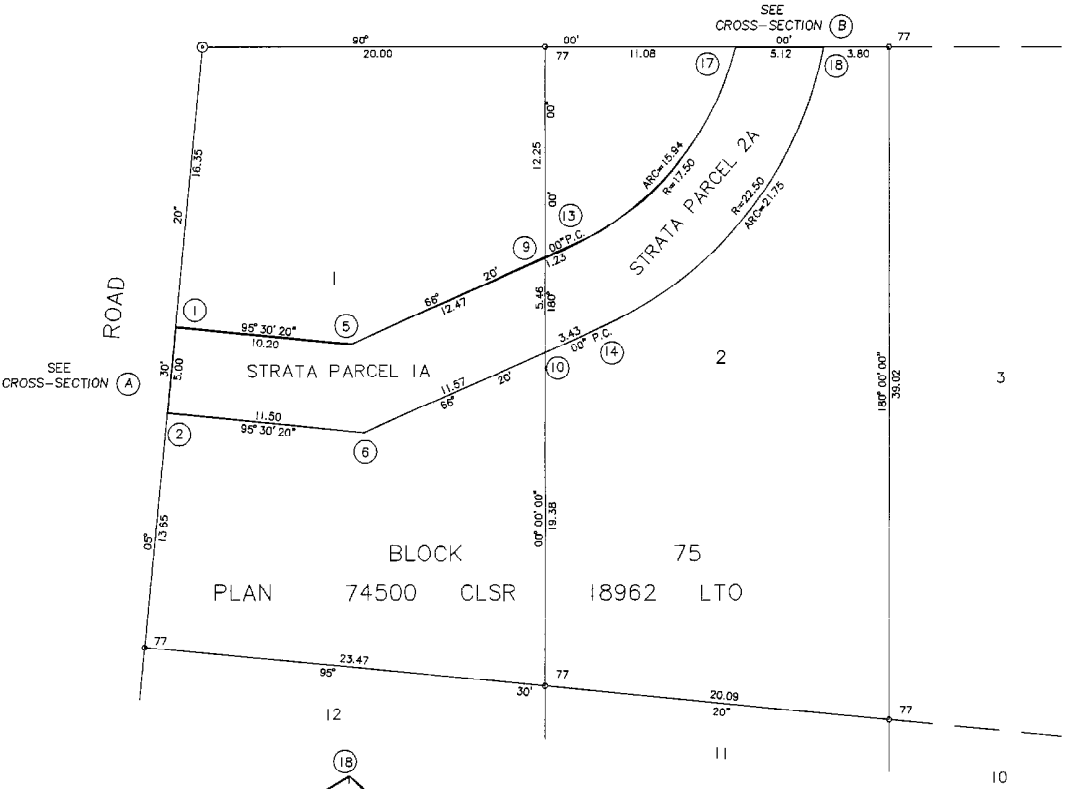


TABLE OF ELEVATIONS	
POINT	GEODETIC ELEVATION
1	663.50
2	663.50
3	660.50
4	660.50
5	663.30
6	663.27
7	660.27
8	660.30
9	663.00
10	663.04
11	660.04
12	660.00
13	662.97
14	662.97
15	659.97
16	659.97
17	662.97
18	662.97
19	659.97
20	659.97