

Tp. 62, Rge. 28, W. 4M.
LOCATION PLAN
SCALE = 1:40,000

COORDINATE TABLE		
PT.	NORTHING	EASTING
CSM 75G01	6,736,207.221	492,774.732
CSM 75G02	6,736,192.473	492,912.074
1	6,736,175.2	492,953.1
2	6,736,190.2	492,923.9
3	6,736,149.6	492,923.9
4	6,736,114.3	492,899.9
5	6,736,148.9	492,890.9
6	6,736,148.1	492,855.0
7	6,736,147.4	492,819.7
8	6,736,146.7	492,787.9
9	6,736,150.8	492,776.5
10	6,736,201.5	492,883.7
11	6,736,204.0	492,854.8
12	6,736,205.6	492,854.8
13	6,736,204.0	492,817.1
14	7,736,203.9	492,781.1

LEAVE SPACE FOR RECORD DETAILS

5 X 20 CENTIMETRES

SPECIMEN ONLY

SHEET 2 OF 3

PLAN SHOWING

AS - BUILT LOCATION of
TELEPHONE LINE

IN

PRAIRIE INDIAN RESERVE No. 151
Township 62 Range 28 W.4 M.
Province of Alberta

LEGEND

Monuments found

Control Survey Markers found

Powerline and Poles shown thus: — — — — —

Distances are in metres.

Coordinates shown are UTM, referred to the Central Meridian of Zone 8(135° West).

To obtain ground level distances multiply joins between coordinates by the combined factor of 0.99978.

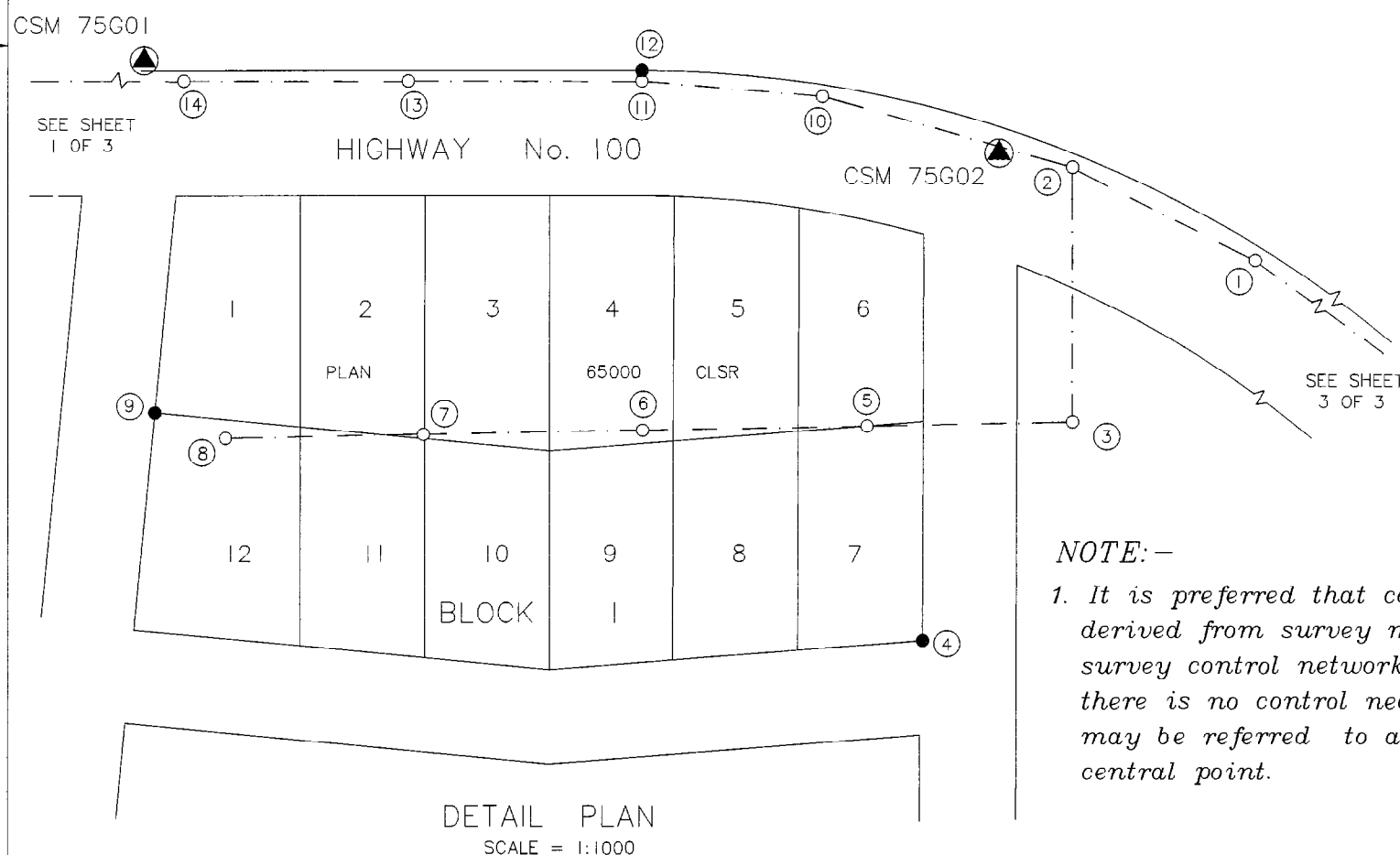
Certified Correct

G.A. BAYNE, CLS, March 1, 1993.

NOTE:-

1. It is preferred that coordinates be derived from survey markers in a survey control network. However if there is no control nearby coordinates may be referred to a convenient central point.

LEAVE SPACE FOR ENDORSEMENTS



DETAIL PLAN
SCALE = 1:1000

SP 16-2

D16-3